

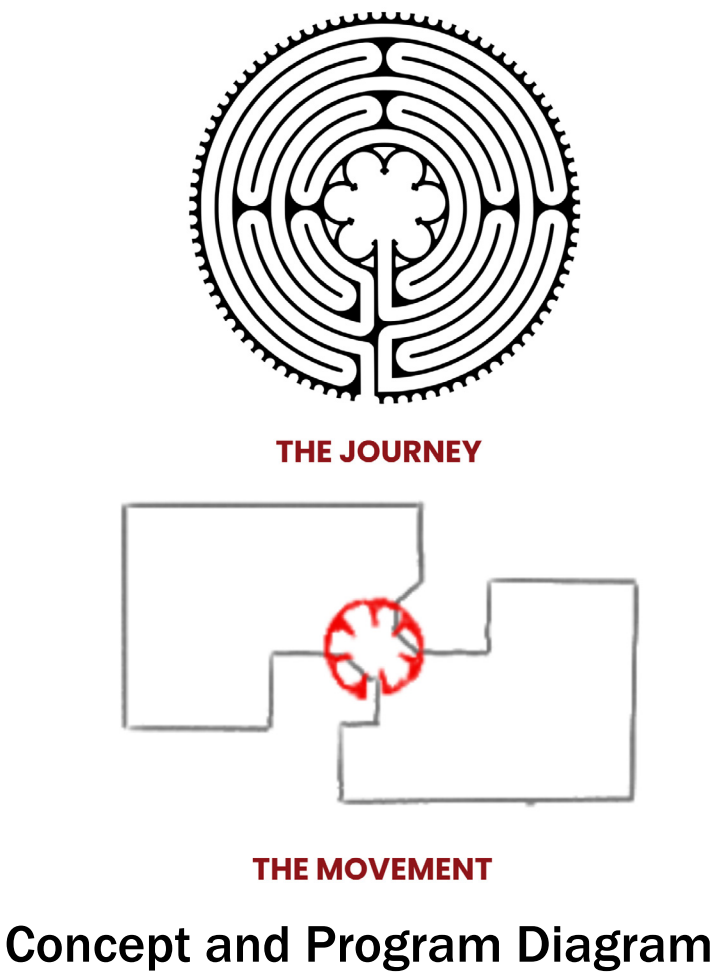


Daytime Render (standing from Church and Gould Street)

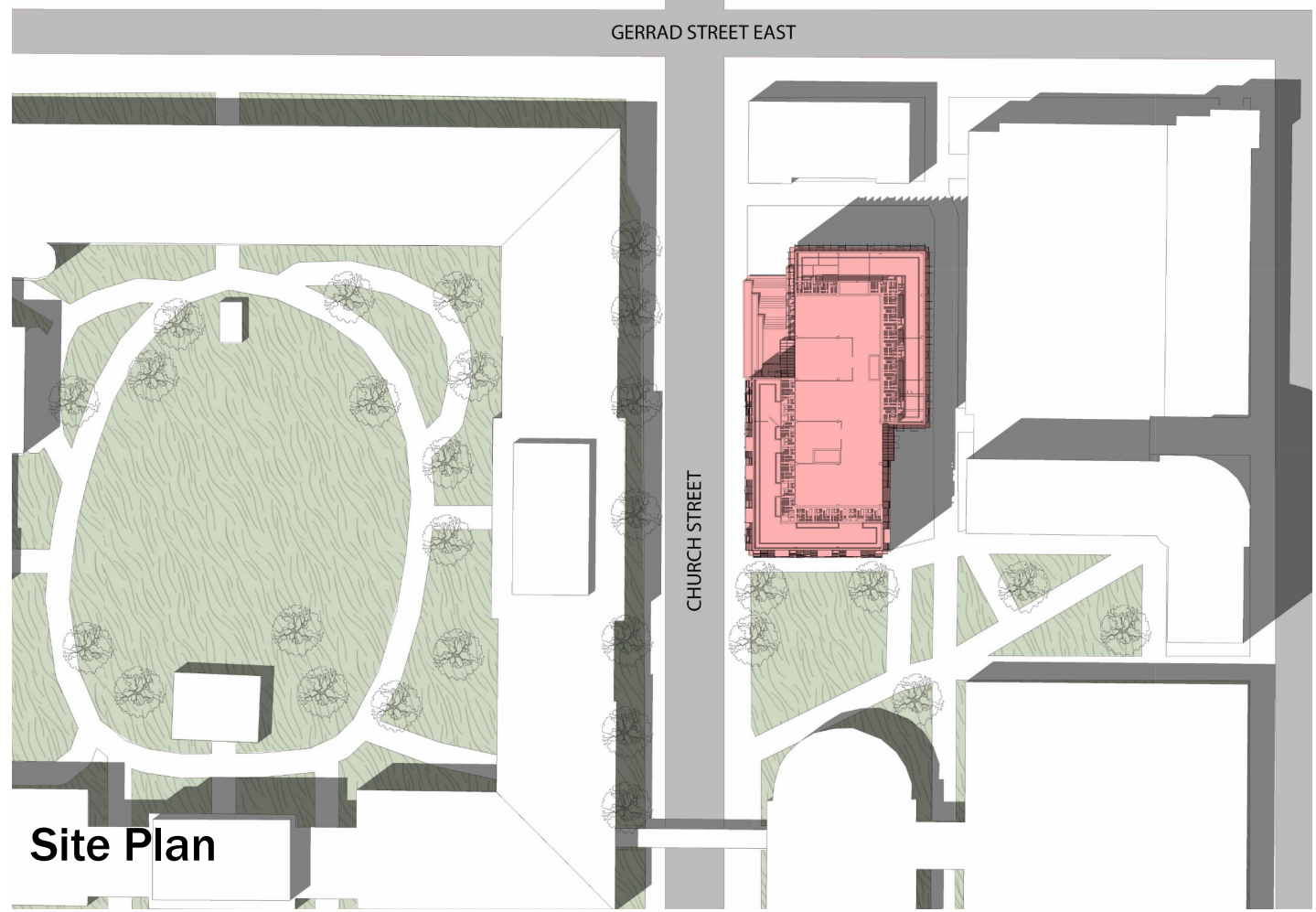
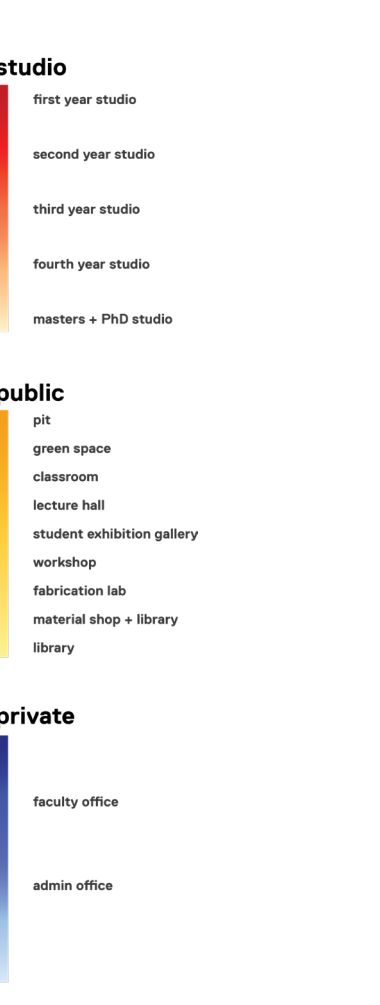
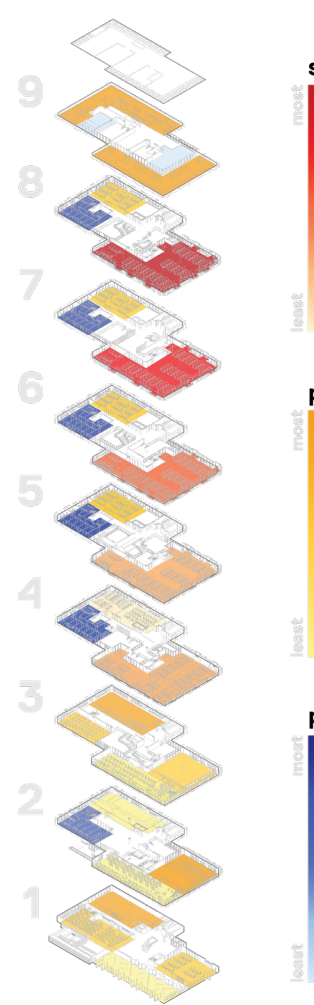
FLUX

Simran Moondi, Elijah Jamir

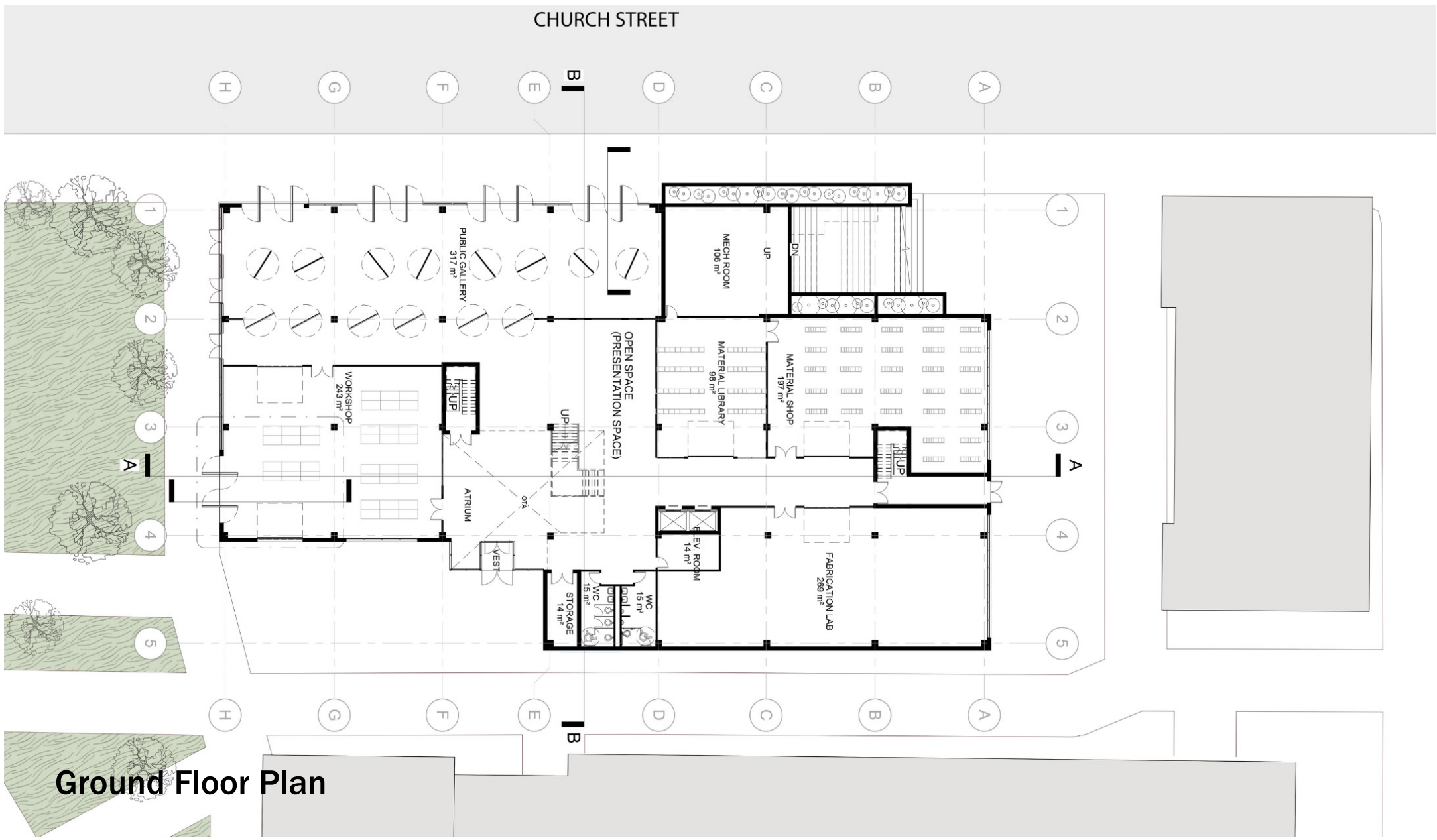
The design's Journey concept is inspired by the Toronto Public Labyrinth, symbolizing personal and academic exploration, akin to TMU students' daily commutes and educational paths. This idea is physically manifested through a series of galleries, thresholds, and staircases that guide movement and mark progress through the building. The circulation fosters a balance of progression and pause, offering reflective spaces such as pop-outs and galleries. Movement is further expressed in both the spatial layout and the dynamic facade, which features wind-driven panels. These panels shift in density and color based on interior activity—warmer, denser arrangements highlight active areas, while cooler, more open configurations mark quieter zones. This responsive facade brings the building to life, reflecting its interior energy. The journey through the structure concludes at a serene meditation level with green spaces, providing a calming retreat for students to unwind after navigating the building's vibrant and stimulating academic environment.



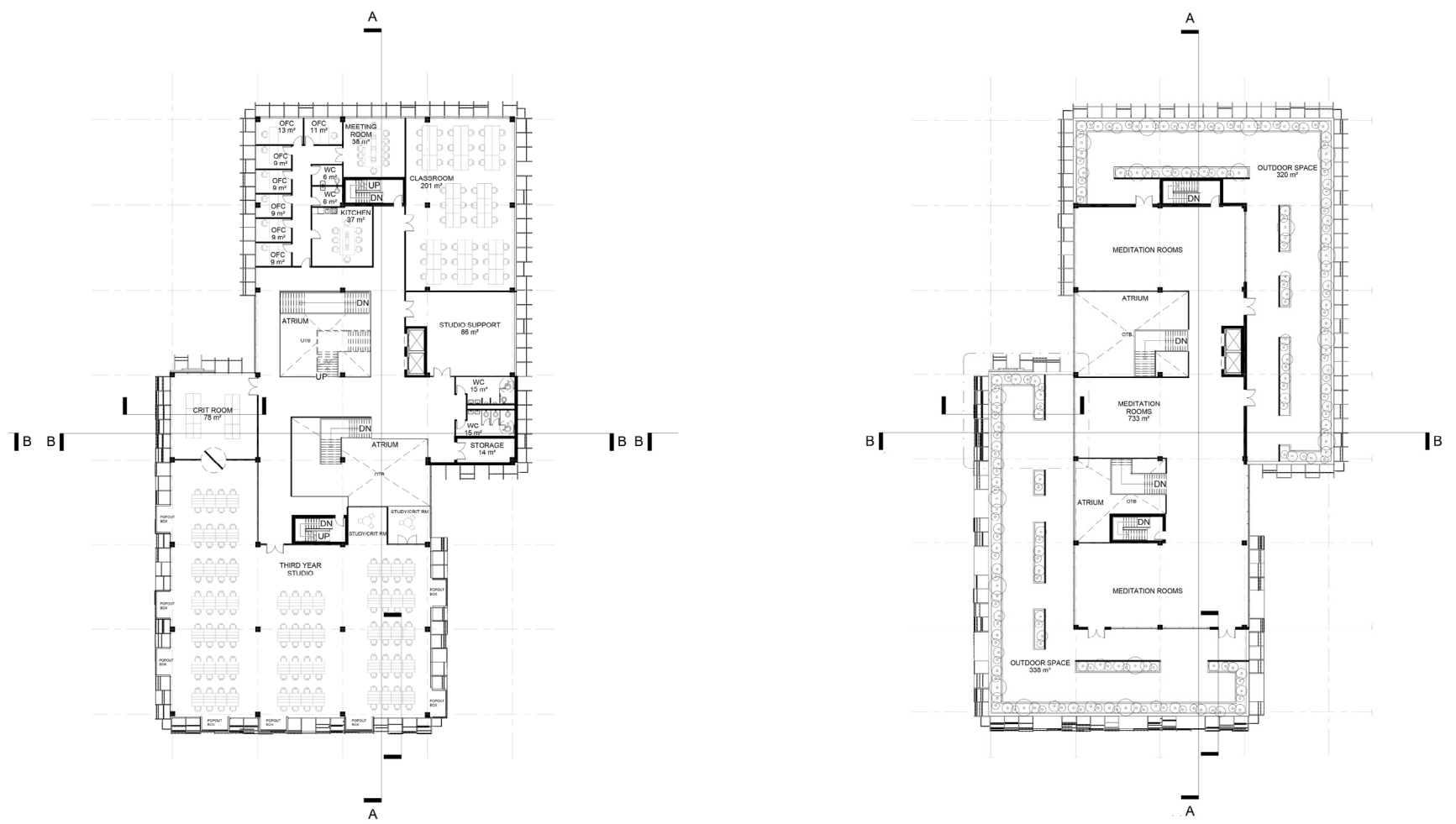
Concept and Program Diagram



Site Plan



Ground Floor Plan



Sixth and Ninth Floor Plans



Study / Crit Rooms & Labyrinth Stairs (standing from fourth floor looking up)



Typical Studio Space with Pop-Out Box Rooms